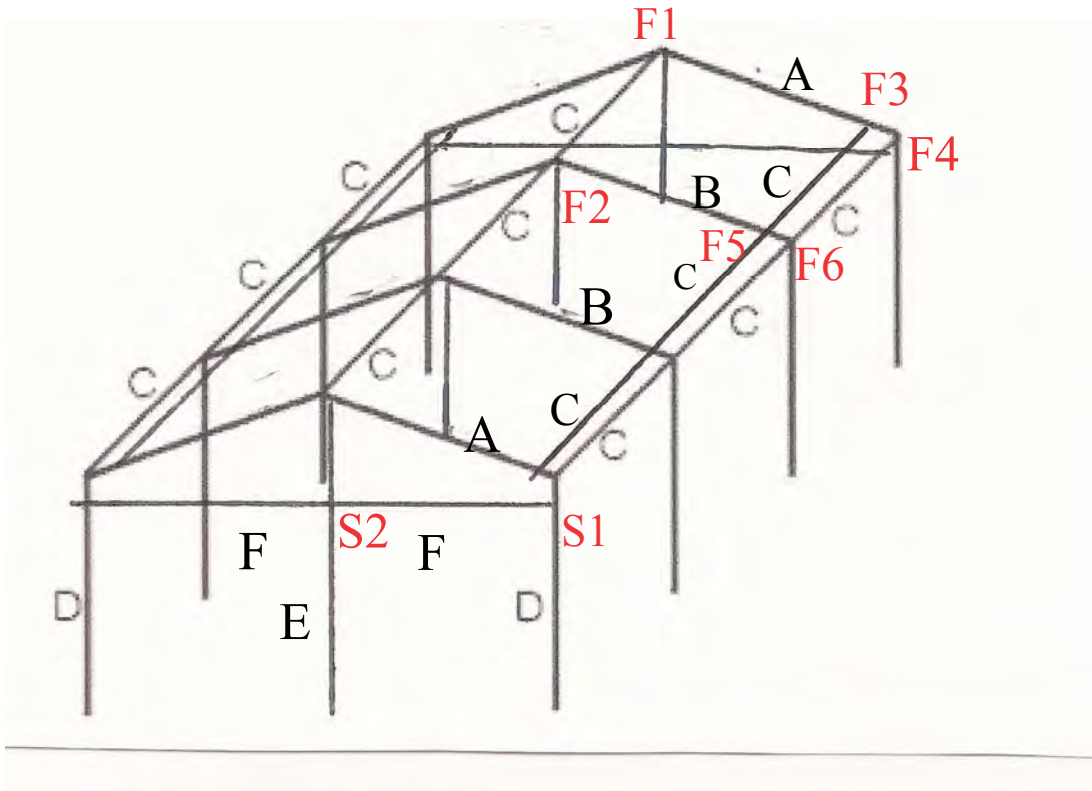


# TARP SET #1



# Tarp # 1



- A = White Poles (4 Total)
- B = Blue Poles (4 Total)
- C = Yellow Pipes (15 Total)
- D = Short Leg (No Color) (8 Total)
- E = Long Leg (No Color) (4 Total)
- F = Black Poles (4 Total)

- F1 = End Peak Fittings
- F2 = Center Peak Fittings
- F3 = Corner Leg Fitting
- F4 = Outside Corner
- F5 = Inside Leg Fitting
- F6 = Outside "T" Fitting

## Side Bar Fittings

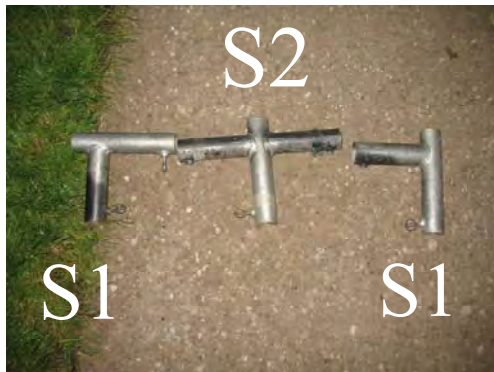
- S1 = Short Leg Fitting
- S2 = Long Leg Fitting





Tarp # 1 is the only with  
With the side cross supports

4 Black poles are  
For the side support  
Braces



Set of 3 fittings for the side support brace  
Make sure to put these on the legs before putting up the tarp.

When raising the brace make sure to lift all 3 pieces  
At the same time.



Overview of the  
side assembly





# Corner Assembly

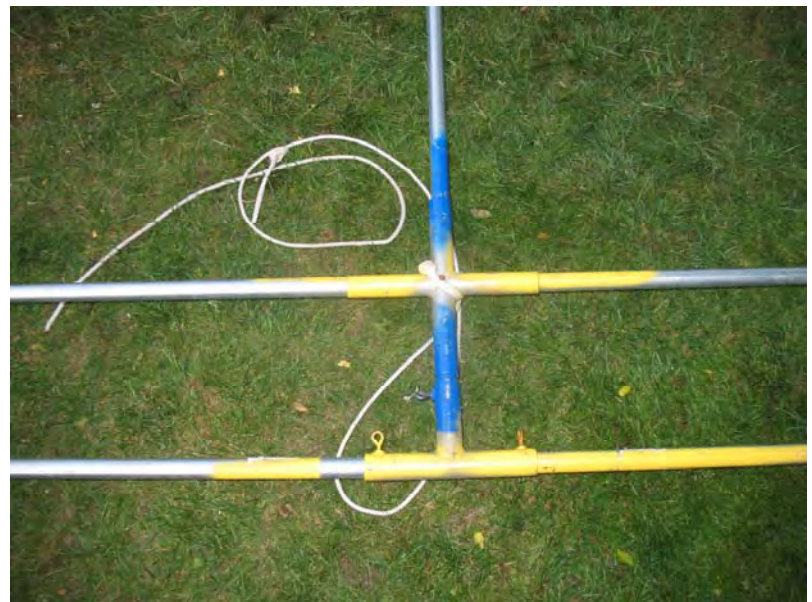


# Corner to Peak Assembly

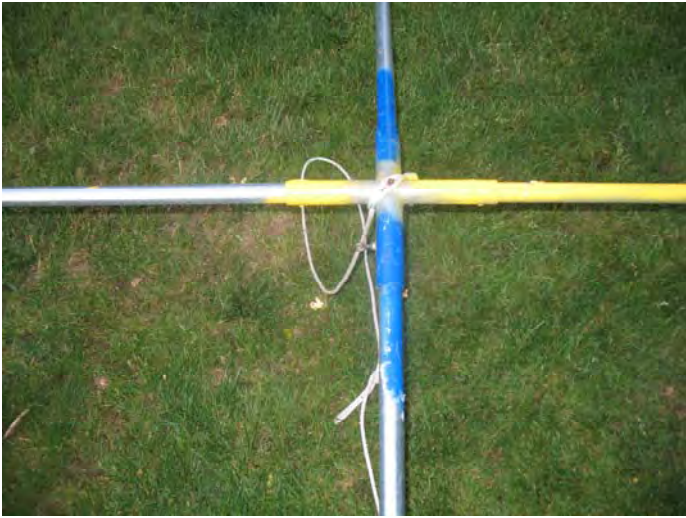
Side Middle Assembly

Top fitting is for the leg

Bottom fitting is a  
“T” connector







# Center Peak Assembly



# End Peak Assembly



End Peak Fitting



Center Peak Fitting



Corner Leg Fitting



Outside Corner



Inside Short Leg Fitting



Outside "T" Fitting